



**TRYP BY WYNDHAM**

PULTENEY STREET ADELAIDE

**TRYP**  
BY WYNDHAM

# Y NOT TAKE THE TRYP

Enter TRYP by Wyndham Pulteney Street and step into Adelaide. Full style, taste and vibe immersion. Plug into our city. Keep pace with its pulse.

## TYME TO CHYLL

Located in the heart of Adelaide's CBD - surrounded by its top attractions. Stunning, modern, upscale, upbeat and eye-catching. Offering 120 Standard, Deluxe and Executive hotel-style rooms. All feature a king bed with pillow-top mattress. Large Smart TVs, free Wi-Fi and walk-in shower.

Get down to business in the Business Centre, distracted in the Games Room or Library, and fit in the gym. Rev up with caffeine and get nourished with Mamacita in the lobby and get your Fiesta on with Mamacita on level 1.

## ECLECTYC

TRYP by Wyndham Pulteney Street Adelaide is the centre of the Venn diagram that is Adelaide. It mirrors its city's corporate, technology, government, medical, art, culture, cuisine, bars, sport, and entertainment precincts. All major attractions are at most three kilometres from the hotel. Walk when the weather is fine or a short drive in an Uber or Taxi when it's not.

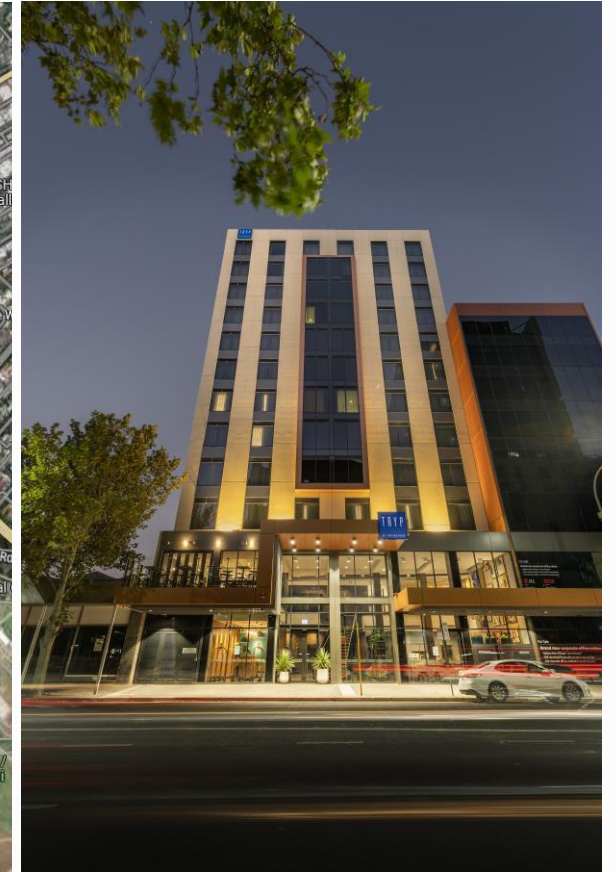
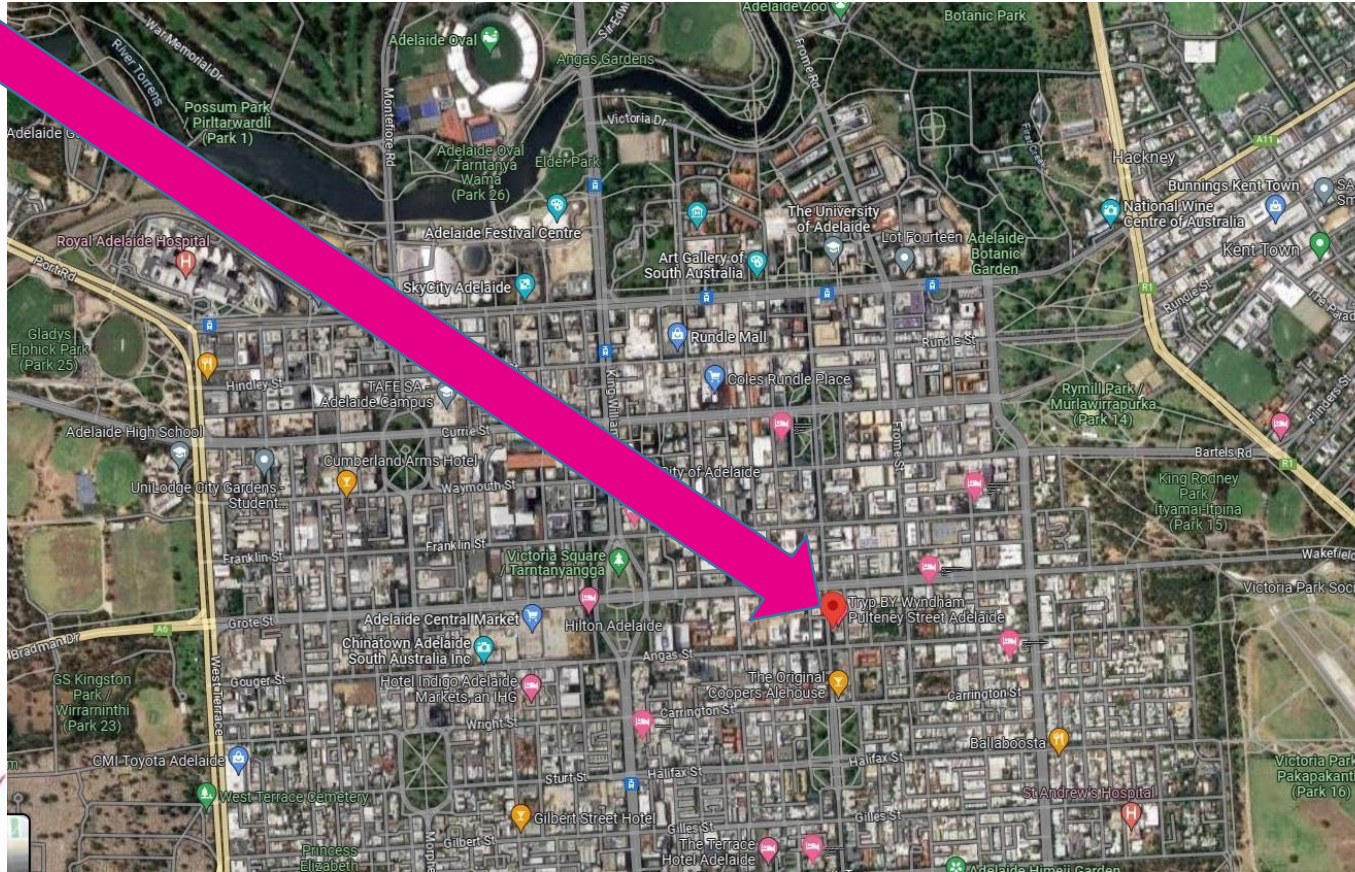
Only 650 metres from Victoria Square in Adelaide's centre, where you'll find the famous Adelaide Central Markets. In town for a corporate event? It's less than two kilometres from the Adelaide Convention Centre. Visit Parliament House, explore the Festival Theatre and get in a spot of shopping at Rundle Mall - all just a kilometre away.





# WHERE TO FIND US

⊕ Here we are in our prime spot at 266 Pulteney Street on the eastern side of the CBD. That's a beautiful eastern Adelaide sky at dusk framing us perfectly.





# WHERE WE SAY HY

## + Reception

We are here 24/7 no matter when you arrive or move on to the next step in your journey, we will be here for you.



## + Chyll Out

Waiting for a pickup from out front or for your friends to come down and meet you before heading out.? Chyll in comfort and style.



## + Stairway to Heaven?

Well, not quite. But there is a very nice bar up there, and more.....stay tuned.



## Here We Are

Our prime spot at 266 Pulteney Street on the Eastern side of the CBD. That's a beautiful Eastern Adelaide sky at dusk framing us perfectly.



# GUEST ROOMS

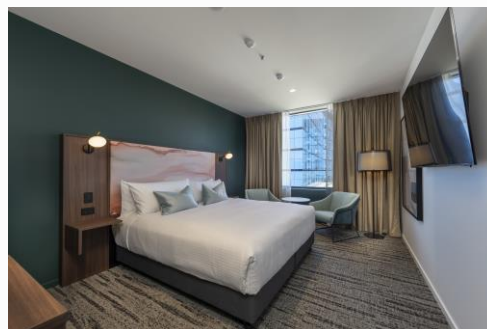
## ⊕ Standard Hotel Room

This spacious hotel-style room comfortably sleeps up to two guests in 22 m<sup>2</sup> and features a king bed. You will appreciate the convenience of a 55" flat-screen HDTV, mini-fridge, Espresso Coffee Pod Machine, and walk-in shower.



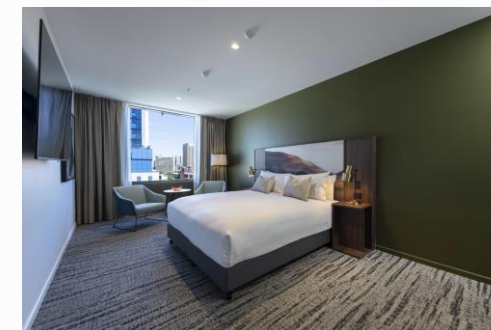
## ⊕ Deluxe Hotel Room

This spacious hotel-style room comfortably sleeps up to two guests in 25 m<sup>2</sup> and features a king bed. You will appreciate the convenience of a 65" flat-screen HDTV, mini-fridge, Espresso Coffee Pod Machine, and walk-in shower.



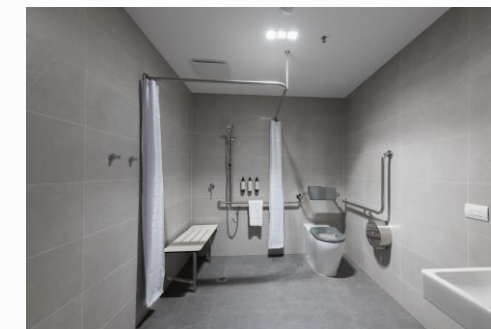
## ⊕ Deluxe Hotel Corner

This spacious hotel-style room comfortably sleeps up to two guests in 29 m<sup>2</sup> and features a king bed. You will appreciate the convenience of a work area, sitting area, flat-screen 65" HDTV, mini-fridge, Espresso Coffee Pod Machine, and walk-in shower which boasts a rain shower head. Standard occupancy is two, however this unit can accommodate up to three guests with the addition of a rollaway bed (at cost).



## ⊕ Deluxe Hotel Corner Accessible Room

This spacious hotel-style room comfortably sleeps up to two guests in 30 m<sup>2</sup> and features either a king bed or two single beds. You will appreciate the convenience of a sitting area, flat-screen 65" HDTV, mini-fridge, and Espresso Coffee Pod Machine. The bathroom features an accessible shower. Standard occupancy is two, however this unit can accommodate up to three guests with the addition of a rollaway bed (at cost).



## Executive Hotel Suite

This spacious hotel-style suite comfortably sleeps up to two guests in 45 m<sup>2</sup> and features a king bed in a separate bedroom. You will appreciate the convenience of a sitting area, large window, 1 x 65" and 1 x 75" flat-screen HDTV, mini-fridge, Espresso Coffee Pod Machine with Milk Frother, and walk-in shower. Standard occupancy is two, however this unit can accommodate up to three guests with the addition of a rollaway bed (at cost).





# FOOD & BEVERAGE

## ⊕ Mamacita on level 1

Mamacita is Adelaide's newest Mexican Restaurant & Bar, a sleek, modern, and stylish space with a feel for fiesta and a personality that is muy caliente!

Mexico and Adelaide share that 'South of the border' attitude, so the flavours of Mexico blend perfectly with our unique South Australian produce, service, and heart. Classic Mexican and Tex Mex dishes created with ingredients from SA (wherever possible) are complemented by Tequilas, Mezcal, cold Chelas, an extensive Margarita cocktail menu and other 'potions' along with a great selection of SA wines, a range of SA brewed beers, and SA distilled vodka, whiskey, and gin.

Bask in the best of both worlds on Mamacita's balcony as you enjoy your favourite Margarita in balmy Adelaide weather. Share platillos (small plates) with your friends, tackle a Taco or challenge yourself to something Grande, all the while being entertained by anything from sports on the big TVs to bands and shows. Bienvenidos Amigos!

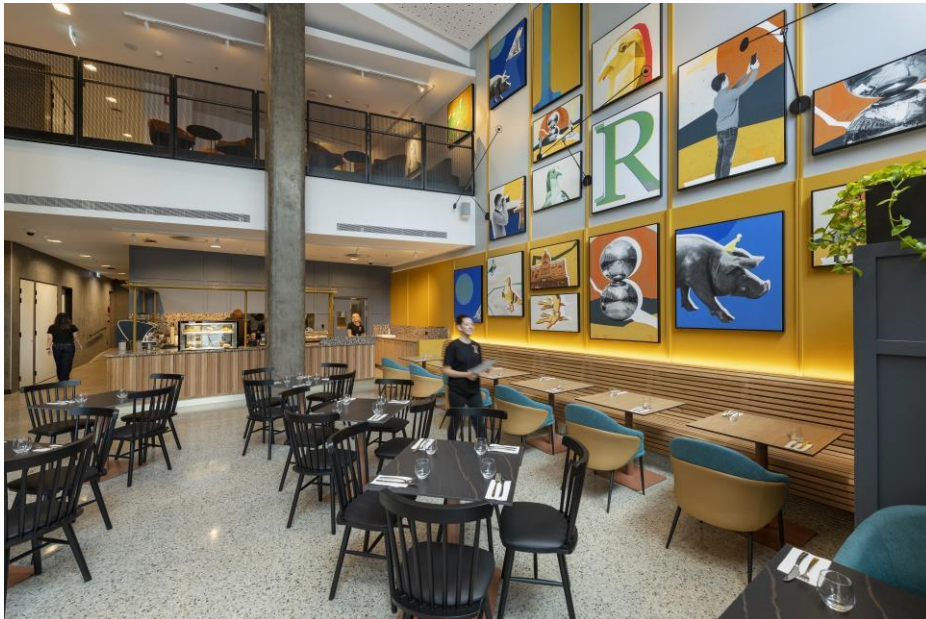


# FOOD & BEVERAGE

## ⊕ Mamacita in the lobby

Mamacita is even more 'South of the border' in the lobby! Enjoy breakfast in the lobby with old standards like Eggs Benny or get your mañana started with a breakfast burrito!

Lunch is a delicious vista of Empanadas, Enchiladas and much much more!

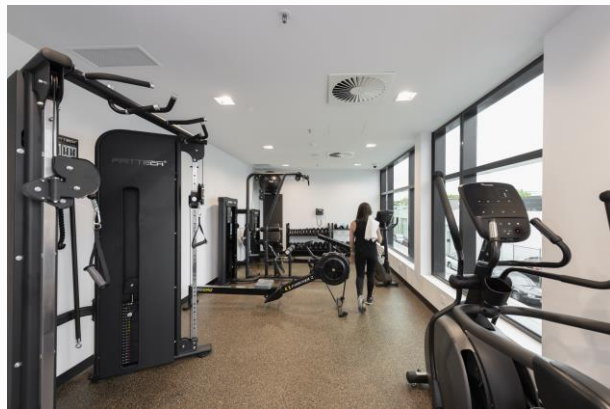




# FACILITIES

## + Gym

Fully equipped gym on level 1 with Treadmill, Functional Trainer MultiStation, Fitness Bench, Lat Pulldown and Low Row, Seated Leg Curl/Extension, Range of Free Weight Dumbbells, Range of Medicine Balls, Stationary Bike, Rowing Machine, Elliptical, Swiss Ball and Gym Mats.



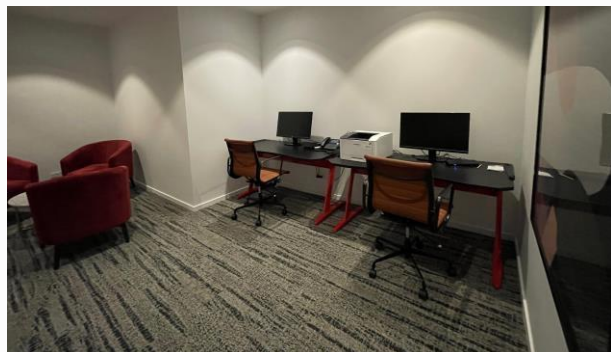
## + Library

Already a comfortable and quiet space to relax, watch this space as it develops into a well-stocked library with book exchange on Level 6.



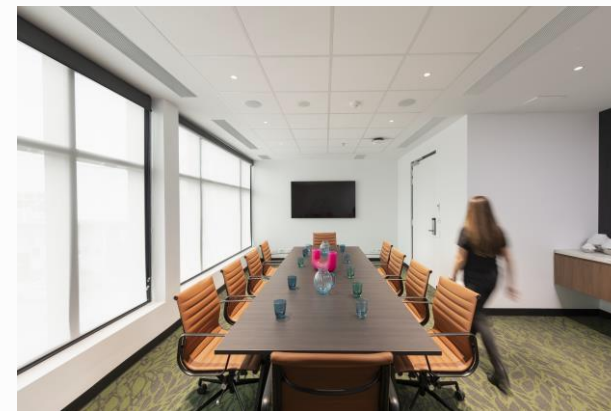
## Business Centre

Comfortable Casual Seating and 2 x Docking Stations with Monitors, Printer, Phone and Free Wi-Fi Access on level 4.



## + Boardroom

A 35 m<sup>2</sup> space with natural light and permanent boardroom table for 10 guests. Service bench with fresh drinking water outlet and 75" Smart TV capable of connecting to a laptop for presentations.





# ADELAIDE: SOUTH AUSTRALIA'S CULTURAL GEM

Nestled between the rolling Adelaide Hills and the sparkling Gulf St Vincent, Adelaide, the capital of South Australia, is a city that effortlessly blends sophistication with a laid-back charm.

Often dubbed the “20-minute city” for its compact, accessible layout, Adelaide invites travelers to explore its vibrant cultural scene, lush parklands, and proximity to world-class wine regions—all wrapped in a welcoming, unhurried vibe.

Whether you're a foodie, art enthusiast, or nature lover, Adelaide delivers a refined yet approachable escape.



## Festivals and Flair

Adelaide's nickname, the “Festival City,” is well-earned. Beyond the Fringe and WOMAdelaide, the Adelaide Festival (March) brings world-class theater, music, and dance, while the Tour Down Under (January) kicks off the global cycling calendar with vibrant street parties.

Even outside festival season, Rundle Mall, a pedestrian shopping strip, buzzes with street performers, boutique stores, and the quirky “Malls Balls” sculpture—a local landmark.



# EXPLORE THE CITY

Hutt Street



Known for its vibrant café and bar scene (6 min walk from hotel)

Victoria Square



Vibrant public space surrounded by historic buildings and bustling markets (9 min walk from hotel)

National Wine Centre



Offers immersive wine experiences (6 min drive from hotel)

Rundle Mall



Primary retail and dining hub (15 min walk from hotel)

South Australian Museum



One of Australia's oldest museums (9 min drive from hotel)

Adelaide Oval



World renowned sports and entertainment venue (8 min drive from hotel)



# LET'S CONNECT

## **Saif Ian Rashid**

General Manager

+61 0491 879 982

[Saif.rashid@wyn.com](mailto:Saif.rashid@wyn.com)

## **Praj Chaudhari**

Front Office Manager

+61 0409 229 133

[Praj.Chaudhari@wyn.com](mailto:Praj.Chaudhari@wyn.com)

Website

[www.tryphoteladelaide.com](http://www.tryphoteladelaide.com)

Hotel Main Line

+61 8 8100 4000

## **Reservations Email**

[reservations.trypadelaide@wyn.com](mailto:reservations.trypadelaide@wyn.com)

## **GDS Codes**

Chain Code: WT

Amadeus: ADL530

Apollo/Galileo: H2248

SABRE: 397863

Worldspan: 52530

A vibrant, close-up photograph of two women with long dark hair, both wearing large, dark sunglasses. They are blowing a large cloud of multi-colored confetti (pink, yellow, blue, green) towards the camera. The woman on the left is wearing a white tank top, and the woman on the right is wearing a blue denim shirt. The background is dark and out of focus.

TRYP

BY WYNDHAM

POWERED BY THE CITY

MODERN

SAVVY

EXPLORATION